

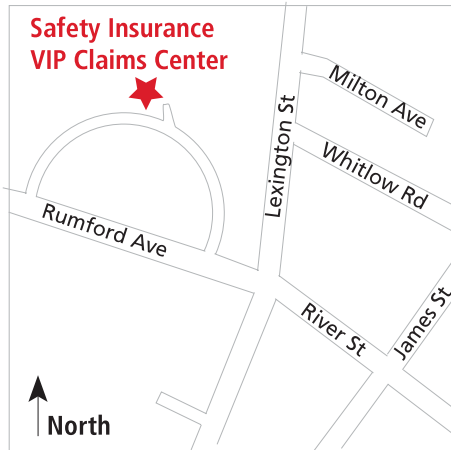
## DIRECTIONS

**Packard Cove Office Park**  
**134 Rumford Avenue, Suite 203**  
**Newton, MA 02466**

## Newton VIP Center

**PHONE 1.877.951.1435**  
**FAX 1.617.527.3853**

### DIRECTIONS:

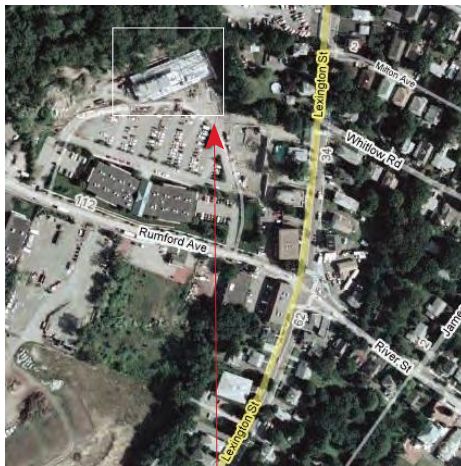


#### VIA THE MASS PIKE

1. Take Exit 16, Route 16 toward West Newton.
2. Travel over Washington St onto Elm Street.
3. Continue on Elm St to the end.
4. Take a left onto River Street.
5. Continue straight onto Rumford Avenue.
6. Take a right into Packard Cove Office Park.
7. Follow signs for 134 Rumford Ave
8. Park underneath the building in our guest parking spots.

#### VIA I-95

1. Take Exit 24, Route 30 East.
2. Continue Rt 30 E for 1 mile.
3. Take left onto Lexington Street travel 1 mile.
4. Take left onto Rumford Ave.
5. Take a right into Packard Cove Office Park.
6. Follow signs for 134 Rumford Ave
7. Park underneath the building in our guest parking spots.



**VIP Claims Center**

#### WE ARE LOCATED AT:

134 Rumford Avenue, Suite 203  
 Newton, MA 02466

Park underneath the building in our guest parking spots.

