

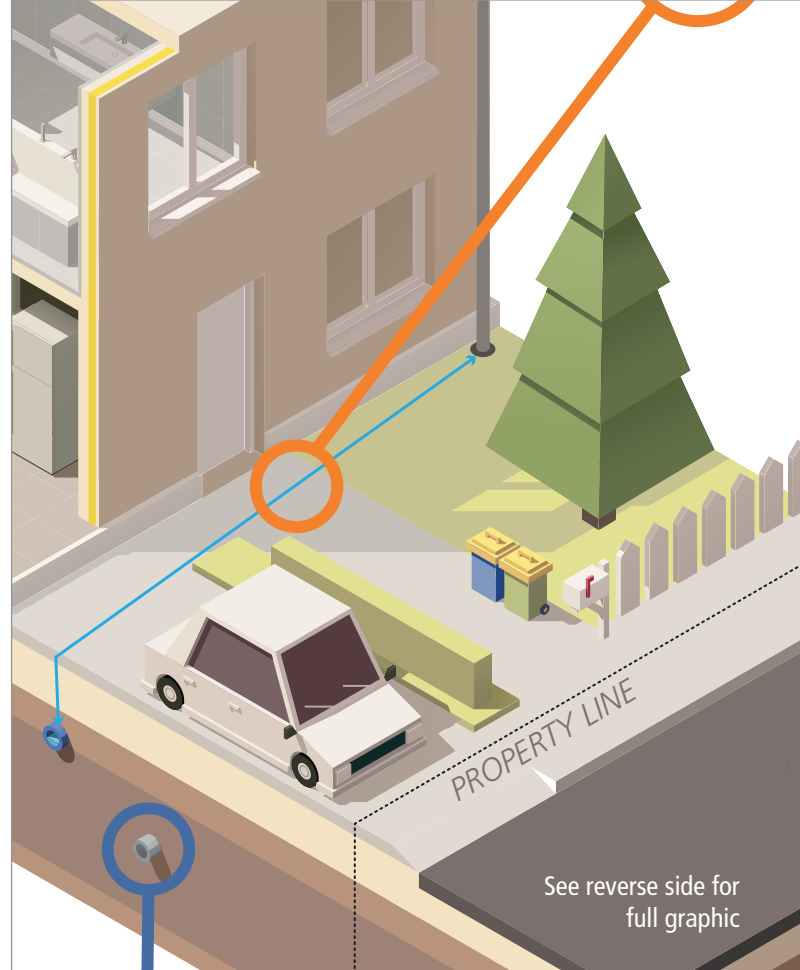
# SERVICE LINE COVERAGE

## Coverage for Underground Piping and Wiring on Your Property

### Coverage is Critical

A service line failure is physical damage to a covered, underground, utility line that results in leaks, breaks, tears, rupture, collapse or arcing. A failure can result in costly repairs. Most homeowners do not realize they are responsible for repairing or replacing the underground piping and wiring located on their property if damaged. Losses can easily total \$3,500 or more when considering repairs, excavation and damage to outdoor property. Service Line Coverage offers a simple and affordable solution. With this coverage, not only are service line repairs covered, but coverage is also provided for the damage to outdoor property caused by the repairs (e.g., driveways, walkways, lawns, shrubbery, and plants). If the home becomes uninhabitable until the repairs are made, hotel and other costs are also covered.

Service Line Coverage is included in our Safety Supreme Plus and Safety Complete endorsements.



### Examples of Covered Services:

- Water Service
- Waste Disposal
- Natural Gas
- Propane
- Steam
- Geothermal
- Electrical Power
- Drainage
- Compressed Air
- Communications

### Coverage Includes:

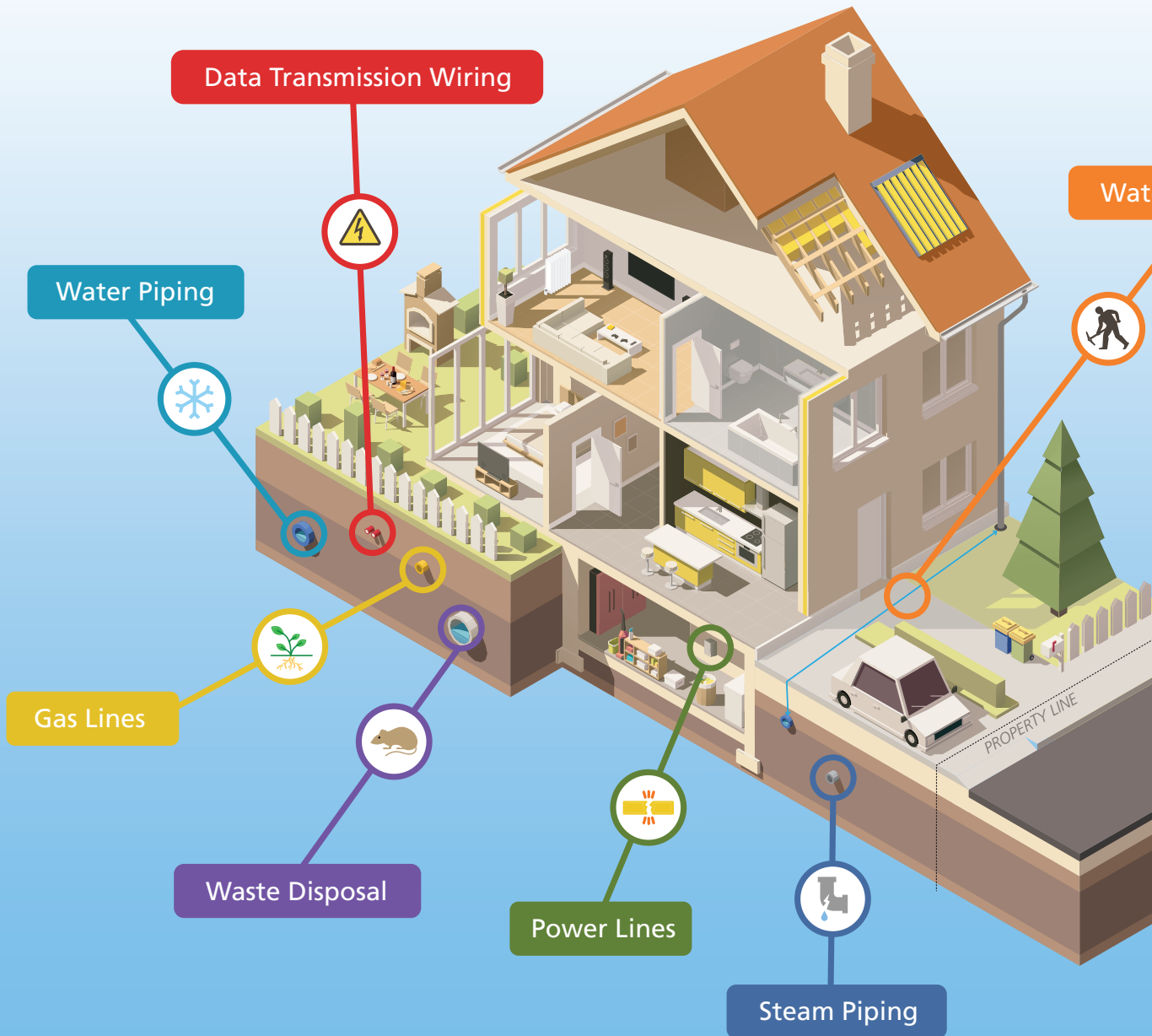
- Loss of use resulting in additional living expenses.
- Excavation costs necessary to repair or replace the damaged, covered, service line.
- Expediting expense for temporary repairs and permanent replacements.
- Damage to outdoor property such as trees, shrubs, plants, lawns, walkways or a driveway that is damaged as a result of a covered service line failure.

### Details

Limit: \$25,000








Deductible: \$1,000

# SERVICE LINE COVERAGE



## Service Line Coverage

Protects homeowners from losses to underground piping and wiring linked to systems servicing their household.\* Possible exposures that could cause a service line failure include:

-  Electrical Arcing
-  Corrosion
-  Pipe Deterioration
-  Rodents
-  Landscaping Mishaps
-  Ground Freeze
-  Tree Root Growth

\*Homeowners are responsible for service lines on their property, from their house to the city's or town's main line.